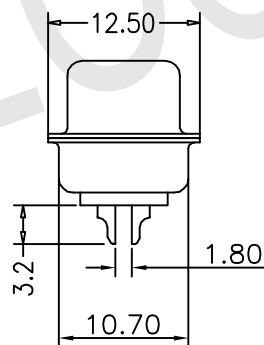
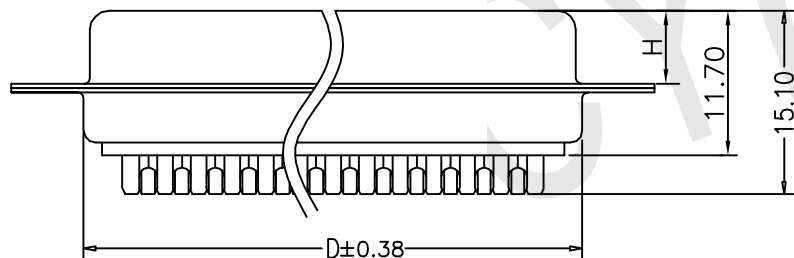
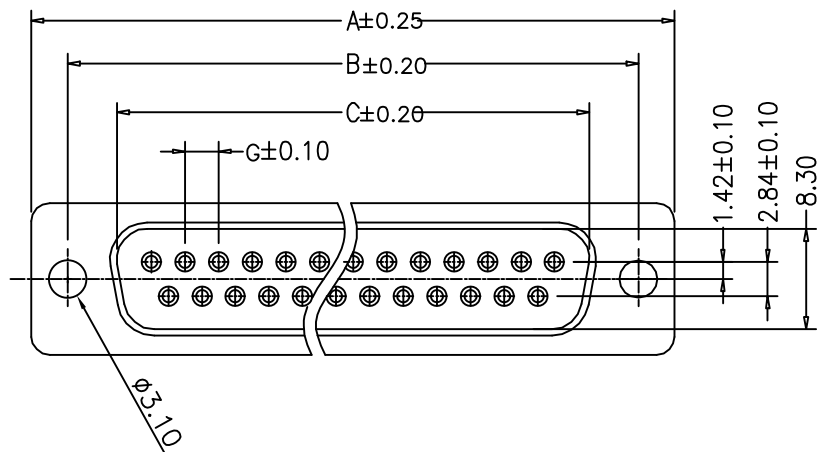




REVISIONS				
LTR	DESCRIPTION	DATE	DWN	APVD
A	RELEASED	01Jan16	AW	WK



REMARK/注释:
 1.CHARACTERISTICS/特性:
 1.1. RATED VOLTAGE: 250V
 额定电压: 250伏特
 1.2. RATED CURRENT: 3AMP
 额定电流: 3安培
 1.3. CONTACT RESISTANCE: 25mohms MAX.INITIAL ; 40mohms MAX.AFTER
 接触阻抗:初始 25mohms 最大; 最终 40mohms 最大
 1.4. INSULATION RESISTANCE: 5000Mohms MIN.at 500V DC
 绝缘阻抗:5000兆欧 最小,在500伏直流电下
 1.5. DIELECTRIC STRENGTH: 750VRMS
 耐电压: 750伏特
 1.6. OPERATING TEMPERATURE RANGE: -55°C ~ 85°C
 工作温度: -55°C ~ 85°C
 1.7. INSERTION/EXTRACTION FORCE PER CONTACT : 500g Max./30g Min.
 单PIN插拔力: 500克 最大/30克 最小
 1.8. MATING/UNMATING CYCLES : 50MATINGS MIN FOR GOLD-FLASH
 500MATINGS MIN FOR 30u" GOLD
 耐插拔: 镀G/F为50次
 镀30u"为500次
 2.MATERIAL/材质:
 2.1. INSULATORS: PBT+30% G.F(UL94V-0) BLACK
 胶芯: PBT+30% G.F(UL94V-0) 黑色
 2.2. CONTACTS: BRASS C2800R-H, 80u" Min TIN PLATED , 50u" Min NICKEL ALL OVER.
 端子:黄铜(C2800R-H),锡底最小50u",整只端子镀锡最小80u".
 2.3. FRONT SHELL: SPCC,100u" Min NICKEL TOP OVER,50u" Min COPPER UNDER PLATE.
 前壳: SPCC, 铜底50u"最小,镀镍100u" 最小.
 2.4. BACK SHELL: SPCC,100u" Min BRIGHT TIN TOP OVER,50u" Min COPPER UNDER PLATE.
 后壳: SPCC, 铜底50u"最小,镀亮锡100u" 最小.

PART No.	POS.	A	B	C	D	G	H	插入力 (max)	拔出力	
									Min	Max
YL013-009-001	9	30.81	24.99	16.30	19.28	2.74	5.90 ^{+0.15} _{-0.15}	3.0kgf	0.33kgf	2.0kgf
YL013-009-002	15	39.20	33.32	24.60	27.65	2.74	5.90 ^{+0.15} _{-0.15}	5.0kgf	0.45kgf	3.3kgf
YL013-009-003	25	53.10	47.04	38.30	41.10	2.77	5.70 ^{+0.25} _{-0.25}	8.3kgf	0.78kgf	5.6kgf
YL013-009-004	37	69.32	63.50	54.80	57.44	2.77	5.70 ^{+0.25} _{-0.25}	12.3kgf	1.10kgf	8.2kgf

THIS DRAWING IS A CONTROLLED DOCUMENT.

DIMENSIONS: mm	TOLERANCES UNLESS OTHERWISE SPECIFIED: 0 PLC ± 0.50 1 PLC ± 0.30 2 PLC ± 0.20 3 PLC ± 0.15 4 PLC ± - ANGLES ± 3°	DWN 18Jan2016	东莞市宇亮电子有限公司 DONG GUAN YU LIANG ELECTRONICS CO.,LTD NAME DB Female Type SIZE A4 DRAWING No. YL013-009 WEIGHT 1.1 GRAMS	
	THIRD ANGLE PROJECTION	CHEK 18Jan2016		
		APVD 18Jan2016		
		PRODUCT SPEC -		
		CUSTOMER DRAWING	SCALE 1 : 1	SHEET 1 of 1