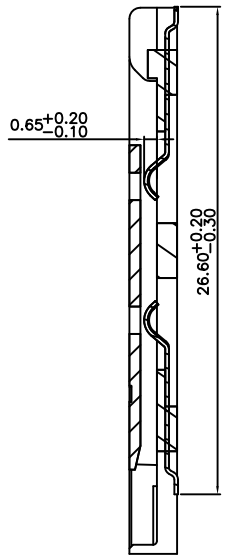
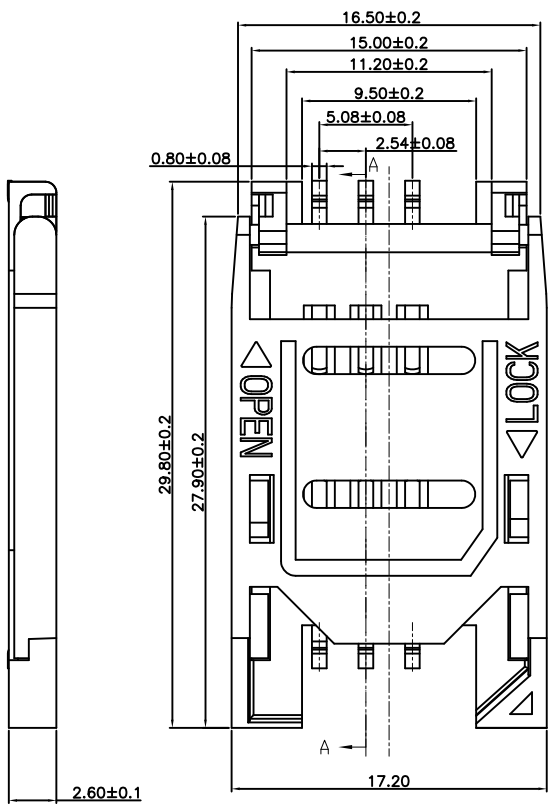
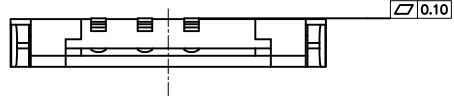
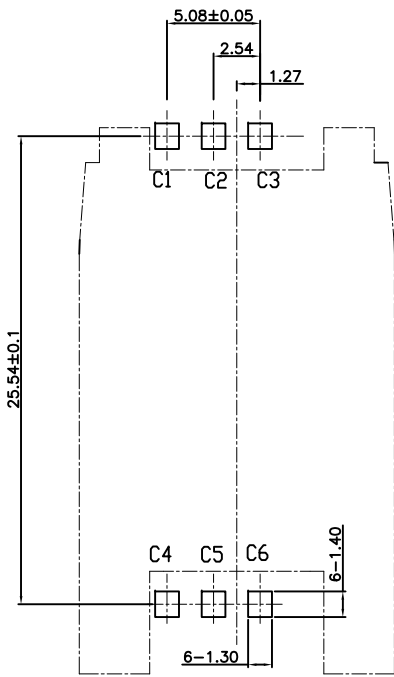




REVISIONS				
LTR	DESCRIPTION	DATE	DWN	APVD
A	RELEASED	01Jan16	AW	WK



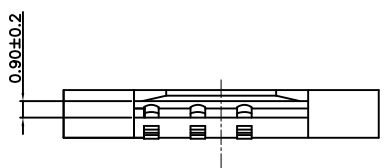
SECTION A-A



RECOMMENDED PCB LAYOUT

TECHNICAL CHARACTERISTICS

- General characteristics
 - Contact principle: Friction technology
 - Operating position: Shaft up/down/horizontal
 - Mounting System :Smt (Post Optional)
 - Durability: 5000 cycles min.
- Mechanical characteristics:
 - Insulation material :Thermoplastic ,UL 94v-0
- Electrical Characteristics
 - Number of contacts (Optional): 6pins or 8pins
 - Contact resistance: 50mΩ initial, 100mΩ max
 - Insulation resistance :>1000MΩ /500V DC
- Solder ability
 - Wave: Not applicable
 - Vaporphase: 215°C, 30sec. Max
 - IR reflow: 250°C, 15sec. Max
 - Manual soldering: 360°C, 3sec. Max
- Environmental Characteristics
 - Operating temperature : -40°C ~ +85°C
 - Operating humidity: 10% ~ +95%RH
 - Storage temperature: -40°C ~ +85°C
 - Storage humidity: 10% ~ +95%RH
 - Thermal shock: -40°C ~ +85°C, 5cycles.
 - Damp heat: 40°C, 90%RH, 10days.
 - Salt-mist: 35°C, 5%NaCl, 24H



YL004-004-XXX
PART NUMBER

THIS DRAWING IS A CONTROLLED DOCUMENT.		DWN A. WU 01Jan2016	东莞市宇亮电子有限公司 DONG GUAN YU LIANG ELECTRONICS CO., LTD
DIMENSIONS: mm	TOLERANCES UNLESS OTHERWISE SPECIFIED: 0 PLC ± 0.50 1 PLC ± 0.30 2 PLC ± 0.20 3 PLC ± 0.15 4 PLC ± -	CHEK S. CHIEN 01Jan2016	
THIRD ANGLE PROJECTION	ANGLES ± 3'	APVD Abel 01Jan2016	SIM CARD 2.54MM 6P H=2.6MM 掀盖式
		PRODUCT SPEC —	
		WEIGHT —	SIZE A4
		DRAWING No. Y=YL004-004	
		CUSTOMER DRAWING	
		SCALE 1 : 1	SHEET 1 of 1